

Canadian Society of Questers



THE QUESTER



Volume 28 No 4 Journal #85

Winter Solstice 2008

The Canadian Society of Questers Convention Autumn 2008



ON THE COVER

Images by Will Clark

Front: Joshua

Back: Keywest

Will Clark's article
Visual Fre-quen-cies
Is on page 27

Visual Frequencies

By Will Clark

“If it were possible to transport ourselves through time and space, to the very origin of human life and, thus, the human need for expression, we would find one very potent truth that underlies virtually all of mankind's most brilliant creations: the celebration of the Divine through beauty and creativity.”

~Siddhartha V. Shah

Central to the development of this new or remembered art/science is the knowledge of interconnected natural patterns. This art or science of patterns will unify our knowledge of structures, processes and subtle energies with sacred geometry being the essential foundation for its' creation. Only by understanding the complete relativity of these patterns and their interconnectedness to the universal process can we responsibly seek to use this knowledge.

From this perspective what we call sacred geometry is in fact our ancestors legacy of pattern knowledge. At every scale of existence, from the subatomic to the galactic, the same key patterns bring all things into existence. It is a remarkable historical fact that many of these same patterns including shapes, forms, proportions, and rhythms, have been well known for centuries.

Sacred Geometry is an ancient science and a key to understanding the way the universe is designed. It is a "map" of the step-by-step movement of energy into matter creating the physical world, as we know it. It is the "language" of creation that exists at the foundation of all life revealing the basic building blocks of our universe!



Water rings 102305

Exploring the world of sacred geometry you begin to see the wonderful patterned beauty of creation. Examples can be found in the patterns of snow flakes, pine cones, flower petals, crystals, the branches of trees, a nautilus shell, the star we spin around, the galaxy we spiral within; all life forms as we know them. These forms emerge out of the timeless geometric codes.

Bio-geometry (a science that deals with the energy of shapes) continues to support my theory about

these natural forms. Bio-geometry uses shape, color, motion, orientation and sound to produce a vibrational quality that balances energy fields. These shapes interact with the earth's energy fields to create balance on biological systems as well as multiple other levels.

This work was developed and patented by Dr. Ibrahim F. Karim, D.Sc. in Cairo, Egypt, during research that began in 1968. Bio-geometry was, and still is, mainly dedicated to the development of a new art form that enhances the human biological system and gives new meaning to the concept of "sacred space." We are living in a world of patterns, symbols and forms.



Waterfall

Early in my career as a designer I made a choice to shift from a creative direction as an artist, to the corporate world of marketing. I immersed myself for many years in my work while climbing the corporate ladder. Then, one day, while on assignment I visited an artist friend who offered me a chance to once again create. Starting with a large blank canvas I had been given an opportunity to paint and freely express myself without interruption for as long as I wished. This simple gift changed my life!

What unfolded in the next few days seemed as if I was literally walking between the worlds? I soon realized that I had cracked open the cosmic egg, that ball of creative energy I had been holding like a rock, in my chest. Even today it is hard for me to describe this experience in words. The real world (as I knew it) no longer made any sense. For nearly a year my world was turned upside down and I literally thought that I was going insane. I was finally able to regain a normal relationship with the 3-D world by working with a psychologist who eventually understood what had taken place.

I had been guided to move to the New Jersey shore where I could heal. Long walks on the shore helped me to realize that something was awakening from within. This newly acquired sensitivity also allowed me to see things with a whole new perspective. This path also included meeting Joya, who is now my wife. I moved to New England, away from the chaos of the city, which gave me an even greater oneness with this natural phenomenon. Joya introduced me to dowsing, which helped explain even more what was behind that veil of unknowing. Dowsing allowed me to better comprehend many of the secrets of the earth's

energies, which are now visually revealed from this awakening. Dowsing has also given me tools for communicating with this new/remembered realm, with my eyes wide-open.

Shortly after our move to New Hampshire, Joya and I were asked to be artists-in-residence at The Fells (www.thefells.org), now an historic 680-acre landmark and formerly the summer home of John Hay (private secretary to Abraham Lincoln, ambassador to Great Britain and Secretary-of-State under presidents William McKinley and Theodore Roosevelt). While there as artist-in-residence, I became intrigued with the random (chaotic) way that birch branches had fallen on the forest floor around the base of the tree; like a white line drawing there seemed to be a creative intelligence at work. I spent most of the weekend photographing these random patterns.



Later, in my studio, I created a series of carpet patterns by mirroring these natural images back upon themselves. What I began to notice was previously unseen images were emerging from this process.

Upon further exploration, I discovered that this mirroring process revealed hidden imagery unique to the parent image and pattern. I also discovered that dowsing would allow me to communicate with these hidden forms. I dowse which area within an image to mirror, I dowse



how many segments will best reveal this unseen form and I dowse the modality of the energy attached to the form with its unique frequency and vibration.

By revealing these forms, I soon discovered that all around us there is a new kind of magic, a new way to see. It's another world that comes from the other side of the looking glass, from beyond its portal, in a place where chaos gives birth to order. It is a place of exquisitely strange beauty, filled with *Visual Essences*® each one with its own unique “frequency.”

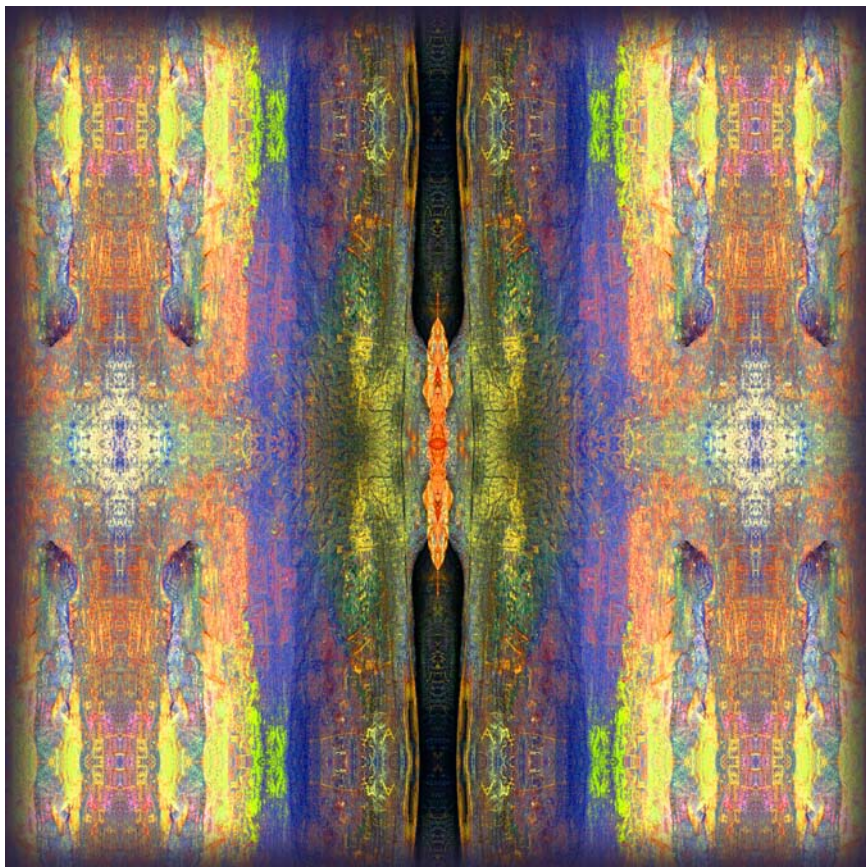
Are these new previously unseen forms maps of our consciousness, similar to the Tibetan Mandela? Could they be bio-geometric signatures hidden from our normal view or are they sacred geometric shapes existing just out of human sight, vibrating thoughts into visual form? Every new form that I create with its own unique shape, color and texture, vibrates within a specific code of its own. These vibrations I now call *Visual Frequencies*®. These visual frequencies seem to accentuate the senses and gently guild you to a meditative/awakened state. They are focal points for intention and manifestation, shifting the subtle energies within a space. Another unique factor that I have noticed with these revealed forms is that each person responds to them differently. I have witnessed individuals brought to tears by merely seeing an image. Sometimes they could not stop gazing at the image as they were moved by the energy that it emitted. Perhaps they were remembering its origin or just bathing in the vibration.

My current research includes the creation of digital images based on these natural forms and matrix patterns. These unique forms emerge from a chaotic and random collection of natural images. The forms are processed through a mathematical formula of proportions based in sacred geometry and the mirroring of themselves, to release these previously unseen characters. I then dowse the revealed form to validate the character of the energy that it holds.

I developed a dowsing chart, which allows me to identify the overall sacred geometric form of the image, the dominant color spectrum and its energy. This allows me to label each pattern with the corresponding frequency, be it a Platonic Solid or a sacred shape and its corresponding values from the various modalities.

As my exploration evolves, I have begun cataloging the images according to their individual vibrational signature. This is a further attempt to explore how they effect or promote specific subtle energy shifts. (*See page 32 for **Visual Frequencies**® **Vibrational Chart***)

This visionary art reflects our true nature as spiritual beings and our relationship to the universe. New images arise from this exploration that



Shasta

resonate with our ancient source, and move us closer to our luminous future selves. By cataloging these various unseen forms and revealing their true nature, I predict that they will soon reveal the reason for their unveiling.

Will Clark has an MFA in Graphics and has worked extensively in the publishing, graphic and dimensional marketing industries. He has always been aware of the subtle energies in nature and our connection to them. He has spent most of his adult life studying various spiritual modalities, nature and sacred art. Will is currently an elected trustee of the *American Society of Dowsters* and heads their Internet communication efforts.

Will has presented his work along with his wife Joya's *Visual Essences*® at various gatherings including the *ASD Annual Convention*.

Contact them at: www.OwlWomamDesign.com, by phone: 603.225.6438 USA or snail mail: 26 South Main St #242, Concord, NH 03301 USA

Patterns

- Circle: Infinity
- Square: Balance
- Triangle: Ascension
- Diamond: Sacred Space
- Pentagon: Spin
- Hexagon: Oneness
- Primary Shape: (Complex geometric pattern)
- Infinity symbol: Infinity
- Tree of Life: (Tree of Life diagram)

Spectrum & Frequency

Platonic Solid

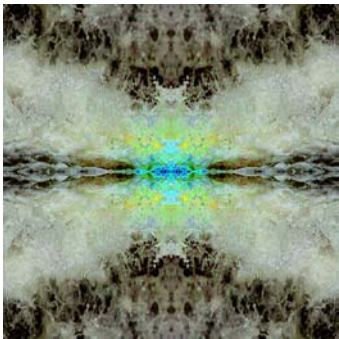
- Earth: (Cube)
- Fire: (Tetrahedron)
- Air: (Octahedron)
- Water: (Icosahedron)
- Aether: (Dodecahedron)

visual fre-quen-cies vibrational chart

Owl Woman Design
 26 South Main St, #242
 Concord, NH 03301
 603-340-5657
 will@owwomandesign.com
 www.owwomandesign.com

Visual Fre-quen-cies® Vibrational Chart

Title: Sacred Waters
Color: Full Spectrum
Frequency: Just below the visible range at 100 GHz
Platonic Solid: Icosahedron (Water)
Sacred Geometric Shape: Circle (Infinity)



Images by
Will Clark

Left:
 0322508 33

Right:
 072407 a 89

